



# CHARTING OUR COURSES



2022 Annual Report  
on Articulation and Transfer  
for Arizona Postsecondary Education



2022

# STEERING COMMITTEE

The AZTransfer Steering Committee is the coordinating body for the statewide articulation and transfer system (AZTransfer). It provides oversight of curricular alignment among public and tribal post-secondary educational institutions and helps ensure that students are appropriately prepared and have the support services required to pursue and complete a post-secondary degree program. A major goal of the AZTransfer Steering Committee is to assist with increasing the number of Arizona students who successfully complete a baccalaureate degree.

The AZTransfer Steering Committee was established in part by the Transfer Articulation Task Force Report of 1996. The Arizona Transfer System is overseen by the AZTransfer Steering Committee and includes the people, systems and infrastructure designed to ensure "...that community college students may transfer to Arizona public universities without loss of credit towards a baccalaureate degree." (ARS 15-1824).

**MARK DENKE\***  
ARIZONA BOARD OF REGENTS

**JAMES PEREY**  
COCHISE COLLEGE

**BETTINACELIS**  
MARICOPA COMMUNITY COLLEGES

**WENDY WEEKS**  
PIMA COMMUNITY COLLEGE

**ANNE JONES**  
ARIZONA STATE UNIVERSITY

**NATE SOUTHERLAND**  
COCONINO COMMUNITY COLLEGE

**LUCINDA LEUGERS**  
MOHAVE COMMUNITY COLLEGE

**TIFFANY VIGGIANO**  
TOHONO O'ODHAM COMMUNITY COLLEGE

**JOANN CHANG**  
ARIZONA WESTERN COLLEGE

**GERALDINE GARRITY**  
DINÉ COLLEGE

**GAYLA STONER**  
NORTHERN ARIZONA UNIVERSITY

**GREG HEILEMAN\***  
UNIVERSITY OF ARIZONA

**MARY KAY GILLILAND\***  
CENTRAL ARIZONA COLLEGE

**SUSAN WOOD**  
EASTERN ARIZONA COLLEGE

**MICHAEL SOLOMONSON**  
NORTHLAND PIONEER COLLEGE

**DIANE RYAN\***  
YAVAPAI COLLEGE

*\* Representative is also a member  
of the AZTransfer Executive Committee*

# CONTENTS

---

About this Report .....	2
Vision, Mission, Values .....	3
Services Overview .....	4
Articulation Task Forces .....	6
Academic Disciplines .....	8
Transfer System Components.....	9
AZTransfer Summit .....	10
Transfer Data Reporting.....	11
Fast Facts .....	12
Course Counts .....	15
Course Equivalency Report .....	16
Dual Enrollment Report .....	18
Community College Credits Transferred.....	19
New Freshman with Associate Degree .....	20
New Freshman with AGECE.....	21
University Students with Community College Credit .....	22
New Transfers Graduation Rate .....	24
Minority Students Who Were New Transfers .....	25
Top Majors of New Transfers.....	26
Looking Ahead.....	27



# ABOUT THIS REPORT

FOR MORE THAN 25 YEARS, academic leaders from each of Arizona's public postsecondary institutions have collaborated to support transfer student success. Known as the AZTransfer Steering Committee, this coordinating body ensures Arizona's students have access to efficient, seamless, and simple ways to transfer from a community college to a university in Arizona.

Born out of legislation passed in 1996, the AZTransfer Steering Committee works to fulfill a promise to provide high-quality educational pathways that lead to baccalaureate degree completion for all Arizonans. This report highlights services and results from the 2021-2022 academic year that deliver on that promise.



# VISION

College degree pathways are accessible to all Arizonans.

# MISSION

The AZTransfer Steering Committee, an organization of academic leaders, supports successful application of transfer credits leading to degree completion for students in all public and tribal higher education institutions in Arizona.

# VALUES

The decisions and actions of the AZTransfer Steering Committee demonstrate our:

- Purpose is to promote and support student academic success;
- Leadership is transparent, collegial, collaborative, and proactive;
- Decision making is data-informed and outcome-focused;
- Fiscal stewardship is financially responsible and goal-oriented.

# SERVICES OVERVIEW

AZTransfer manages and supports the Arizona Transfer System and the faculty, staff, and students who utilize it. AZTransfer is structured with four pillars of service– data reporting, systems development and administration, strategic communications, and learning and program development.

---



## DATA REPORTING

The Arizona State System for Information on Student Transfer (ASSIST) is a relational database containing enrollment and degree information on students attending Arizona's public universities and community college districts.



## SYSTEMS DEVELOPMENT & ADMINISTRATION

AZTransfer produces a variety of tools and resources designed to ensure AZTransfer institutions can efficiently manage the Arizona Transfer System and promote it to their students.

3



## STRATEGIC COMMUNICATIONS

AZTransfer's strategic communications efforts ensure stakeholders are informed about the data, services, tools, training, and events offered by AZTransfer. Branding and user experience are key focuses of the strategic communications plan.

4



## LEARNING & PROGRAM DEVELOPMENT

AZTransfer provides comprehensive training and technical support to its numerous user groups. Training topics include workshops on utilizing our tools, ATF faculty training, and facilitator training.

# ARTICULATION TASK FORCES

AZTransfer relies on a statewide network of nearly 2,000 people. From faculty, to academic advisors, to registrars and graduation technicians, it takes a lot of people in a lot of places to support and maintain the Arizona Transfer System. Each Articulation Task Force (ATF) is comprised of a minimum of one representative from each college and university. Each institution also appoints an AZTransfer facilitator who is considered their institution's curriculum expert. AZTransfer depends on facilitators to help manage the catalog, curriculum, and faculty at their institution.

---



**1,914**

TOTAL MEMBERS



**1,367**

FACULTY MEMBERS



**135**

COMMUNITY  
OF INTEREST MEMBERS



**179**

MEMBERS WITH  
15+ YEARS OF SERVICE



**81**

ACADEMIC ADVISING ATF  
MEMBERS



**77**

ADMISSIONS & RECORDS  
ATF MEMBERS



**61**

ASSIST USERS



**51**

GENERAL EDUCATION  
ATF MEMBERS



# ATF FACULTY MEMBERSHIP BY INSTITUTION

193  
ASU  
Arizona State  
University

54  
W  
ARIZONA  
WESTERN  
COLLEGE

57  
Central  
Arizona  
College

53  
COCHISE  
COLLEGE

46  
Coconino  
Community  
College

39  
Diné College

42  
EASTERN  
ARIZONA  
COLLEGE

MARICOPA  
COMMUNITY COLLEGES

48 32 29 71 72 47 46 21 42 31

41  
MCC  
Mohave  
Community  
College

94  
NAU  
NORTHERN  
ARIZONA  
UNIVERSITY

44  
Northland Pioneer College

94  
PimaCommunityCollege

19  
Tohono O'odham Community College

101  
ARIZONA

41  
Yavapai  
COLLEGE

# ACADEMIC DISCIPLINES

Articulation Task Forces (ATFs) are the heart of AZTransfer's faculty-driven transfer model. Each fall, 1,367 faculty in 43 academic disciplines convene to evaluate course transferability and discuss curricular alignment. The outcome of these meetings provides the content for the tools and resources on AZTransfer.com that students and advisors use to plan a seamless transfer.



# TRANSFER SYSTEM COMPONENTS

Work performed through the Articulation Task Force network is the foundation of the Arizona Transfer System. The components of the system work together to help students plan a seamless transfer without loss of academic credit. Students build a transfer degree plan by completing the Arizona General Education Curriculum (AGEC), common courses, and electives, and supplement this with credits earned through dual enrollment and exams.



## ARIZONA GENERAL EDUCATION CURRICULUM

The Arizona General Education Curriculum (AGEC) is a foundational block of coursework completed at an Arizona community college. The AGEC consists of 35-37 credit hours of courses in English, math, social and behavioral sciences, physical and biological sciences, and arts and humanities. Through Articulation Task Forces, faculty determine which courses fulfill the requirements at their respective institutions and maintain transferability.



## COMMON COURSES

Common courses are lower division courses that apply toward a mapped bachelor's degree program. These courses are reviewed annually at each Articulation Task Force meeting to verify equivalency and applicability.



## MAJORS & DEGREES

Associate and bachelor's degrees are aligned within each ATF academic discipline. The transfer system maps these degrees for majors offered at two or more of Arizona's public institutions.

# AZTRANSFER SUMMIT

The AZTransfer Summit is a statewide convening of all AZTransfer institutions and stakeholders. The Summit provides transfer professionals the opportunity to network, develop new skills, and share best practices in transfer and education attainment. Participants leave the Summit renewed and inspired to continue contributing to the success of the Arizona Transfer System.

The 2022 Summit was held March 24-25 at the We-Ko-Pa Casino Resort.



- 227** ..... TOTAL ATTENDEES
- 13** ..... AZTRANSFER INSTITUTIONS REPRESENTED
- 20** ..... BREAKOUT SESSIONS
- 3** ..... EVENT SPONSORS



# TRANSFER DATA REPORTING



# FAST FACTS

A snapshot of data related to student transfer among Arizona public community colleges and universities as reported in 2021-2022.



9,718

total number of new transfer students from Arizona community colleges to ASU, NAU, or UArizona

10,065

2020-2021

10,176

2019-2020

10,355

2018-2019



77.3%

six-year graduation rate of new transfer students who entered with an associate's degree

76.9%

2020-2021

78.3%

2019-2020

75.7%

2018-2019



18.9%

of university new freshmen entered with Arizona community college credits

20.3%

2020-2021

18.5%

2019-2020

17.6%

2018-2019



49.6%

of university graduates had credit from an Arizona community college (2020-2021)

51.1%

2019-2020

52.6%

2018-2019

54.2%

2017-2018



19.1%

five-year increase in minority baccalaureate degree recipients who were new transfers

26.9%  
2020-2021

28.5%  
2019-2020

33.7%  
2018-2019



48.1%

of new transfer students entered with 60 or more credits

54.7%  
2020-2021

54.7%  
2019-2020

52.5%  
2018-2019



## HEALTH PROFESSIONS

number one major of new transfer students

HEALTH PROFESSIONS  
2020-2021

BUSINESS  
2019-2020

BUSINESS  
2018-2019



32,802

number of Dual Enrollment students at Arizona high schools (2020-2021)

32,969  
2019-2020

29,138  
2019-2020

27,290  
2018-2019



73,469

number of Dual Enrollment course enrollments (2020-2021)

77,562  
2019-2020

69,598  
2019-2020

66,118  
2018-2019

# FAST FACT DATA DEFINITIONS

## FAST FACT

## DEFINITION

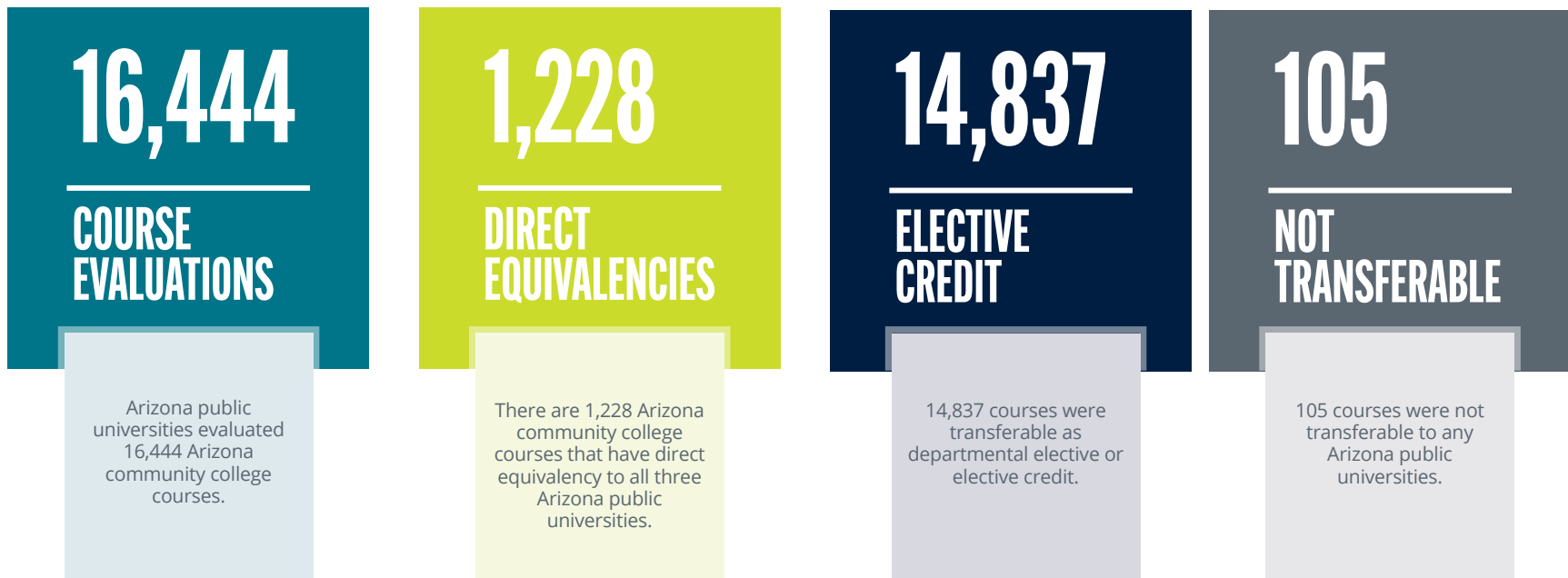
## SOURCE

Total number of new transfer students from Arizona community colleges to ASU, NAU, or UArizona	Students with 12 or more Arizona community college credits who entered an Arizona public university as new transfers in a fall or spring semester. Students may have additional transfer hours from other 2-year or 4-year postsecondary institutions.	New Transfers Report, Page 1
University new freshmen entered with Arizona community college credits	Students with any Arizona community college credits who entered an Arizona university as new freshmen in a fall or spring semester.	New Freshman with AZCC Credits, Page 1
Six-year graduation rate of new transfer students who entered with an associate's degree	Reports university graduation rate after six years for new transfer students from Arizona community colleges who entered ASU, NAU, or UArizona. Student cohort includes students who entered an Arizona university as new transfers in a fall or spring semester and had completed an associate's degree. Percents reflect cumulative counts for students graduating from a university, and receipt of undergraduate degree from any Arizona public university. One year is an academic year (fall, spring, summer) for the entire cohort.	Graduation Rate of New Transfers Report, Page 4
University graduates with credit from an Arizona community college (2020-2021)	Baccalaureate degree recipients at an Arizona public university with 12 or more credits from an Arizona community college who entered as new transfers in a fall or spring semester. Students may have additional transfer hours from other 2-year or 4-year postsecondary institutions.	Baccalaureate Degree Report, Page 1
Five-year increase in minority baccalaureate degree recipients who were new transfers	The five-year rate of change in baccalaureate degree recipients categorized as minorities at an Arizona public university with 12 or more credits from an Arizona community college who entered as new transfers in a fall or spring semester. Students may have additional transfer hours from other 2-year or 4-year postsecondary institutions.	Baccalaureate Degree Report, Page 1
Number one major of new transfer students	Most popular major at the Arizona public universities for transfer students with 12 or more Arizona community college credits who entered as new transfers in a fall or spring semester.	New Transfers Report, Page 3
New transfer students who entered with 60 or more credits	Students who transferred from an Arizona Community College to an Arizona public university with 60 or more credit hours.	New Transfers Report, Page 1



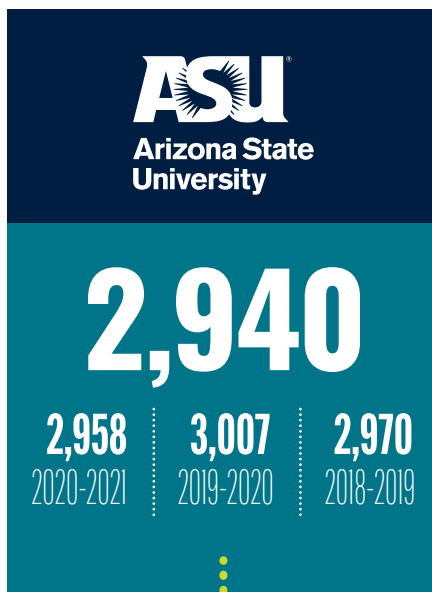
# COURSE COUNTS

Course evaluation and alignment is the cornerstone of AZTransfer's work. The Arizona Course Equivalency Tracking System (ACETS), is AZTransfer's internal system to aid faculty in determining course transferability. Using ACETS, community college faculty can submit information about their courses and route it to university faculty for evaluation. This report provides a quick overview of the transferability of Arizona community college courses to ASU, NAU, and UArizona as reported in 2021-2022.



# COURSE EQUIVALENCY REPORT

Arizona community college courses can be submitted for evaluation at any time throughout the year to determine their transferability to ASU, NAU, and UArizona. Course equivalencies are categorized as direct equivalencies, electives, and not transferable.



Arizona  
community college  
courses with direct  
equivalency to  
ASU



Arizona  
community college  
courses with direct  
equivalency to  
NAU



Arizona  
community college  
courses with direct  
equivalency to  
UArizona



	AWC	CAC	COCHISE	CCC	DINÉ	EAC	MCCD	MOHAVE	NPC	PIMA	TOCC	YAVAPAI	TOTAL
DIRECT EQUIVALENCY	261	202	201	145	88	331	818	124	150	312	90	218	2,940
ELECTIVE	606	352	348	232	157	606	2,986	152	314	714	206	504	7,177
NOT TRANSFERABLE	225	277	182	120	8	331	2,539	182	215	452	21	237	4,789
PENDING	31	38	17	35	54	31	126	3	40	24	64	51	514
TOTAL	1,123	869	748	532	307	1,299	6,469	461	719	1,502	381	1,010	15,420



	AWC	CAC	COCHISE	CCC	DINÉ	EAC	MCCD	MOHAVE	NPC	PIMA	TOCC	YAVAPAI	TOTAL
DIRECT EQUIVALENCY	254	196	166	201	102	416	669	130	157	377	91	247	3,006
ELECTIVE	836	593	546	308	181	856	5,603	317	523	1,079	217	723	11,782
NOT TRANSFERABLE	4	27	21	1	3	14	74	7	4	9	2	15	181
PENDING	29	53	15	22	21	13	123	7	35	37	71	25	451
TOTAL	1,123	869	748	532	307	1,299	6,469	461	719	1,502	381	1,010	15,420



	AWC	CAC	COCHISE	CCC	DINÉ	EAC	MCCD	MOHAVE	NPC	PIMA	TOCC	YAVAPAI	TOTAL
DIRECT EQUIVALENCY	195	140	147	129	68	208	543	102	113	325	79	186	2,235
ELECTIVE	752	347	406	213	166	644	2,991	183	275	712	210	446	7,345
NOT TRANSFERABLE	148	322	161	141	18	412	2,708	170	274	439	76	321	5,190
PENDING	28	60	34	49	55	35	227	6	57	26	16	57	650
TOTAL	1,123	869	748	532	307	1,299	6,469	461	719	1,502	381	1,010	15,420

# DUAL ENROLLMENT REPORT

This report summarizes dual enrollment student activity from the period 2010-11 to 2020-21.

---



**199,212**

Arizona community colleges have served 199,212 dual enrollment students since 2010-11.



**95%**

Since 2010-11, 95% of Arizona dual enrollment students received a grade of "C" or better.



**42%**

Of dual enrollment students, 42% subsequently enrolled at ASU, NAU, or UArizona.



**BUSINESS**

The top major for dual enrollment students who earned a bachelor's degree was business. Biological and biomedical sciences, health professions, engineering, and education round out the top five.



**298**

From 2010-11 to 2020-21, the number of high schools offering dual enrollment has risen from 141 to 298.



**677,505**

Since 2010-11, students have enrolled in 677,505 dual enrollment courses, totaling nearly two million credit hours.

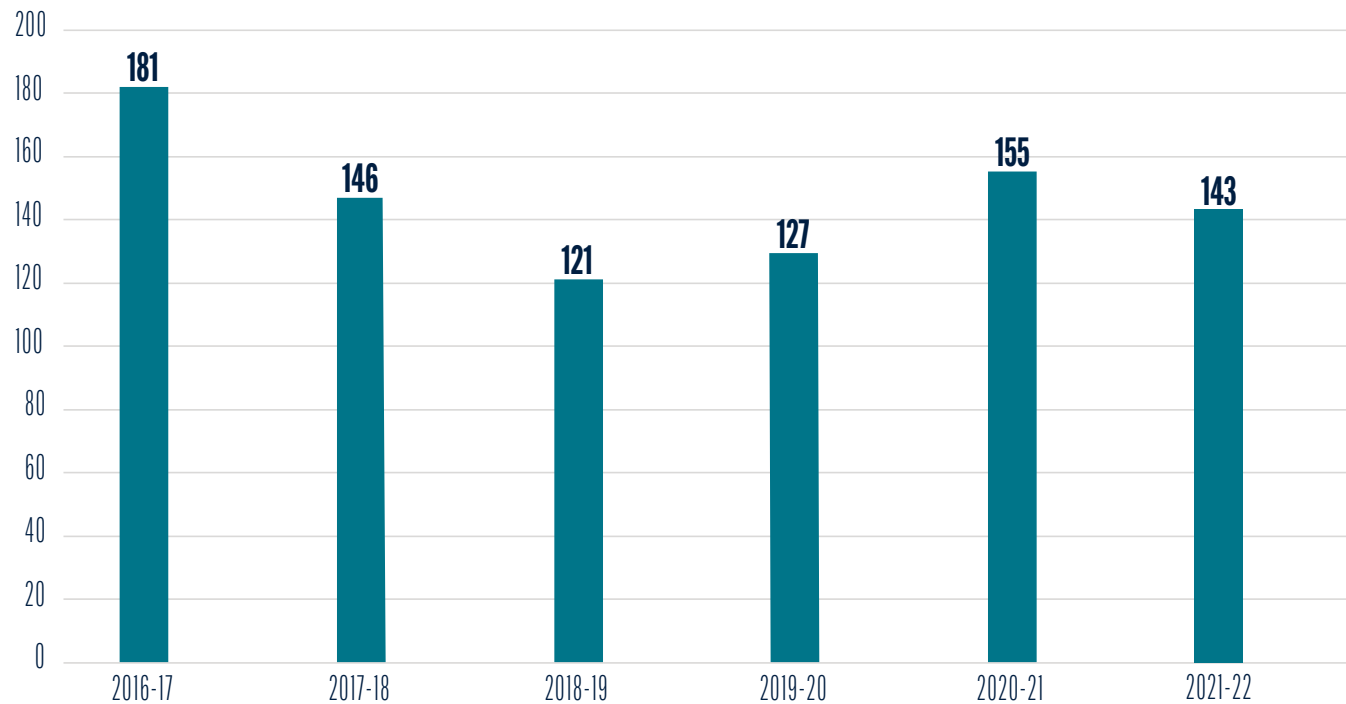
# COMMUNITY COLLEGE CREDITS TRANSFERRED

This table shows the number of Arizona community college credits transferred to ASU, NAU, and UArizona by new transfer students.

	2016-17	2017-18	2018-19	2019-20	2020-21	2021-22
12-23 HOURS	7.9%	8.2%	7.8%	7.2%	7.6%	7.5%
24-34 HOURS	8.4%	9.3%	8.6%	8.3%	8.2%	8.7%
35-59 HOURS	30.8%	30.6%	31.2%	29.8%	30.1%	30.5%
60+ HOURS	52.8%	51.9%	52.5%	54.7%	54.0%	48.1%
ASSOCIATE DEGREE	56.7%	57.3%	57.6%	58.5%	56.7%	N/A
AGE ONLY	5.1%	4.9%	5.1%	4.5%	5.1%	N/A

# NEW FRESHMEN WITH ASSOCIATE DEGREE

This graph shows the numbers of new university freshmen at ASU, NAU, and UArizona who received an associate degree from an Arizona Community College prior to entry.

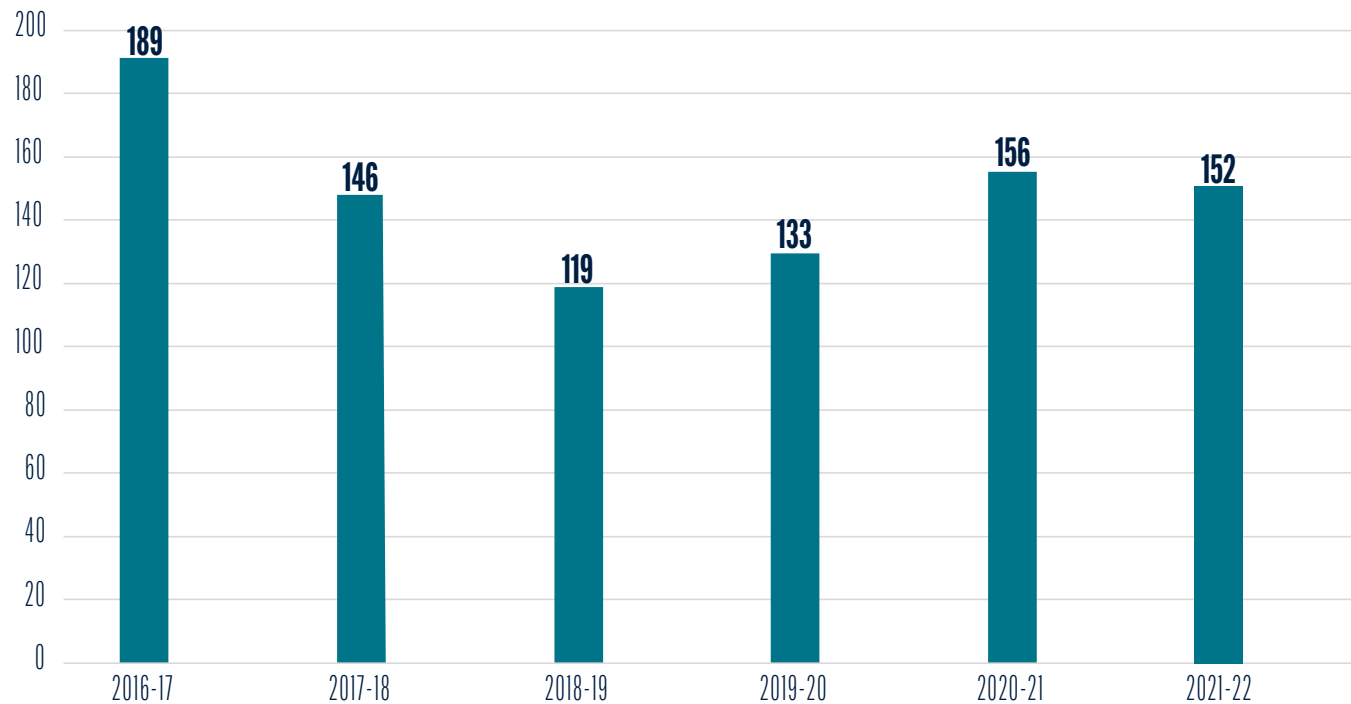


*NOTE: Some degrees are still being conferred.*



# NEW FRESHMEN WITH AGEC

This graph shows the numbers of new university freshmen at ASU, NAU, and UArizona who received an AGECE from an Arizona Community College prior to entry.



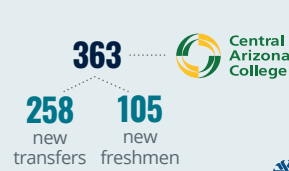
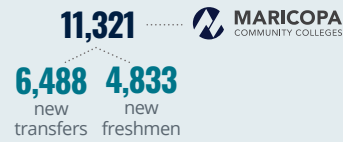
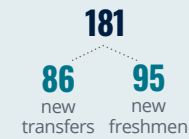
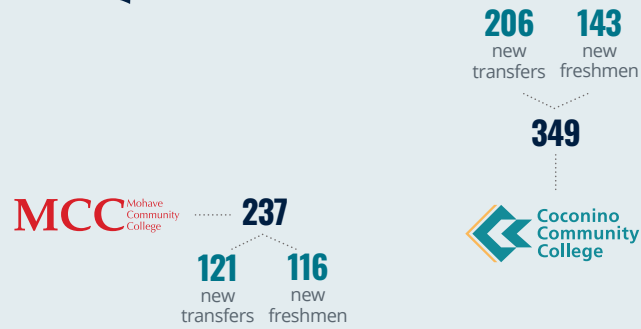
*NOTE: Some degrees are still being conferred.*

# NEW FRESHMEN WITH ARIZONA COMMUNITY COLLEGE CREDIT

Arizona's community colleges are contributing to university degree attainment in more ways than one. This data indicates the total number of students who entered ASU, NAU, and UArizona with credits from an Arizona community college. It is broken down by how many students were traditional transfer students entering with 12 or more community college credits and how many were new freshmen with any amount of community college credit.

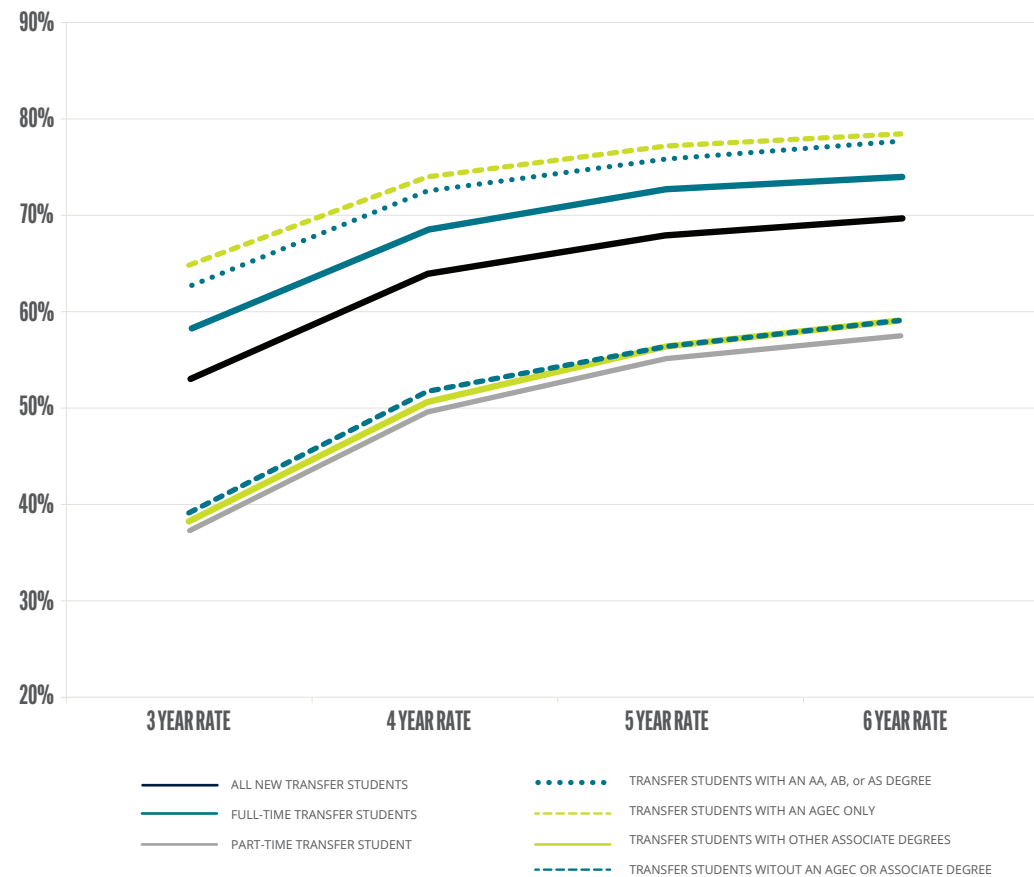
---

*\*Data is unavailable for Diné College and Tohono O'odham Community College. These institutions currently do not send data to ASSIST.*



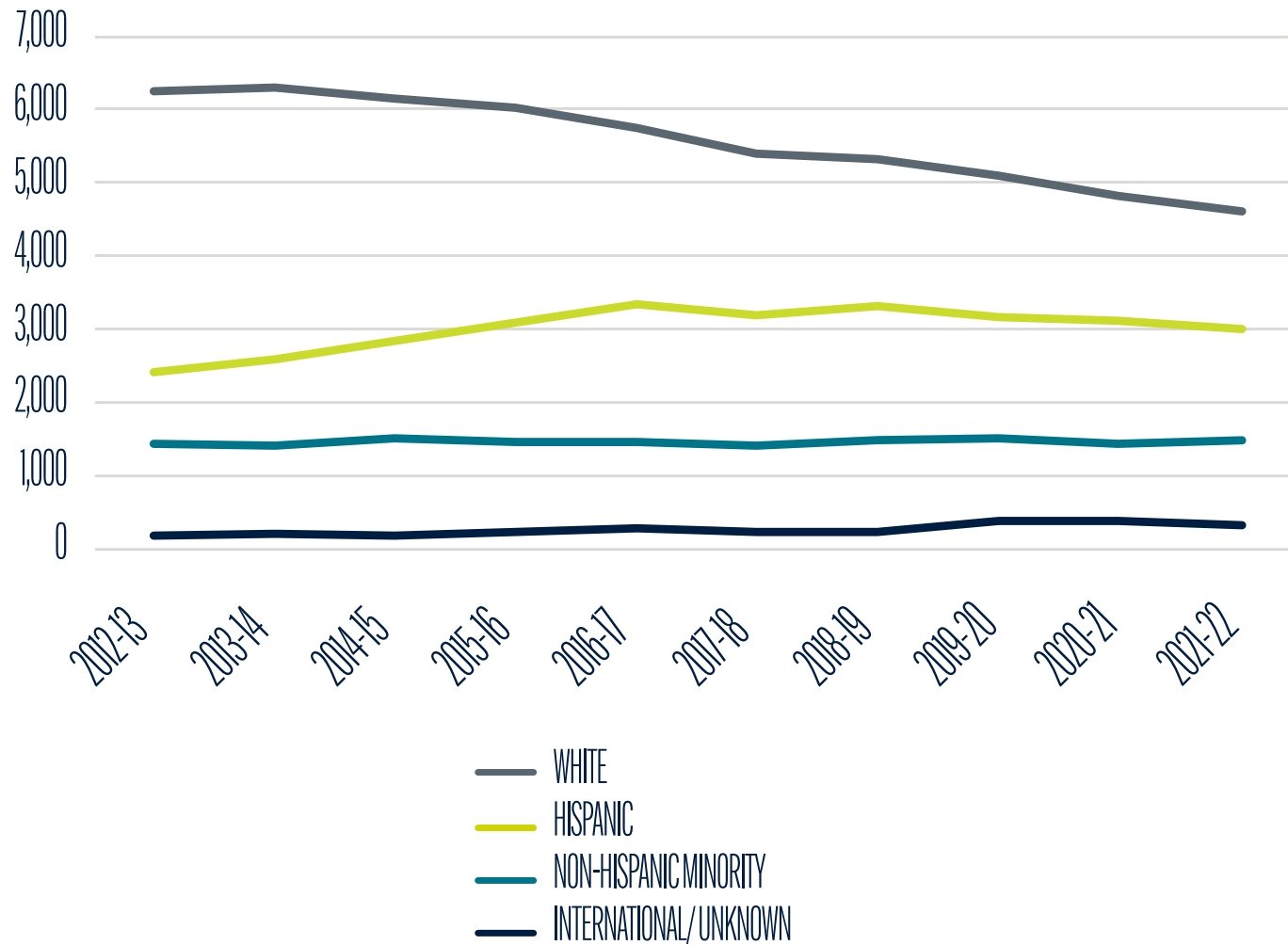
# NEW TRANSFER GRADUATION RATE

This graph shows the graduation rate of new transfer students in the 2015-16 cohort to ASU, NAU, and UArizona from Arizona Community Colleges. Full-time students enrolled in 12 or more credit hours as of the 21st day of the entering semester. Part-time students enrolled in fewer than 12 credit hours.



NOTE: Graduation rates are cumulative. Students graduating within three years are also included in the six years column.

# MINORITY STUDENT NEW TRANSFERS



# TOP MAJORS FOR NEW TRANSFERS

---

Health Professions and Related Programs	13.9%
Business, Management, Marketing, and Related Support Services	13.8%
Psychology	8.3%
Education	7.9%
Biological and Biomedical Sciences	7.1%
Engineering	5.8%
Multi-Interdisciplinary Studies	5.5%
Computer and Information Sciences and Support Services	4.7%
Visual and Performing Arts	4.5%
Social Sciences	4.0%
All Other	24.5%



# LOOKING AHEAD



# LOOKING AHEAD

A glimpse at AZTransfer's focus and goals for the 2022-2023 academic year.

---



## IMPLEMENT THE RE-IMAGINED ARIZONA GENERAL EDUCATION CURRICULUM

AZTransfer leaders will develop a plan to implement the re-imagined AGECEC statewide.



## EMBARK ON A SELF-STUDY OF THE CONTINUED EFFICACY OF THE ARIZONA TRANSFER SYSTEM

With the support of the Gardner Institute, AZTransfer will look critically at the Arizona Transfer System's services and structure to affirm areas of strength and identify opportunities for growth.



## INNOVATE THE MANAGEMENT OF THE ASSIST DATA WAREHOUSE

AZTransfer will seek a long-term solution to sustain and support transfer data management through the ASSIST data warehouse.



# MAKE EVERY CREDIT COUNT

## **KELLY ROBLES**

Executive Director  
[kelly@aztransfer.com](mailto:kelly@aztransfer.com)

## **CIEN LUKE**

Director  
Learning & Program Development  
[cien@aztransfer.com](mailto:cien@aztransfer.com)

## **REBECCA MCKAY**

Senior Director  
Systems Development & Administration  
[rebecca@aztransfer.com](mailto:rebecca@aztransfer.com)

## **ERIN WOODELL**

Senior Director  
Strategic Communications  
[erin@aztransfer.com](mailto:erin@aztransfer.com)



ARIZONA STATE UNIVERSITY  
ARIZONA WESTERN COLLEGE  
CENTRAL ARIZONA COLLEGE  
COCHISE COLLEGE  
C O C O N I N O  
COMMUNITY COLLEGE  
D I N É C O L L E G E  
EASTERN ARIZONA COLLEGE  
M A R I C O P A  
COMMUNITY COLLEGES  
MOHAVE COMMUNITY COLLEGE  
NORTHERN ARIZONA UNIVERSITY  
NORTHLAND PIONEER COLLEGE  
PIMA COMMUNITY COLLEGE  
T O H O N O O ' O D H A M  
COMMUNITY COLLEGE  
UNIVERSITY OF ARIZONA  
Y A V A P A I C O L L E G E

[aztransfer.com](https://aztransfer.com)